

ABC U-PULL-IT

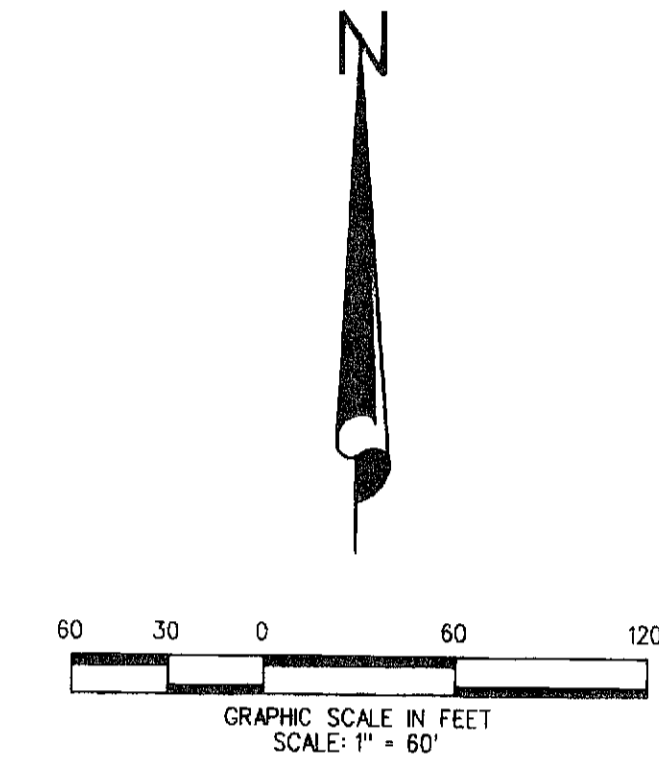
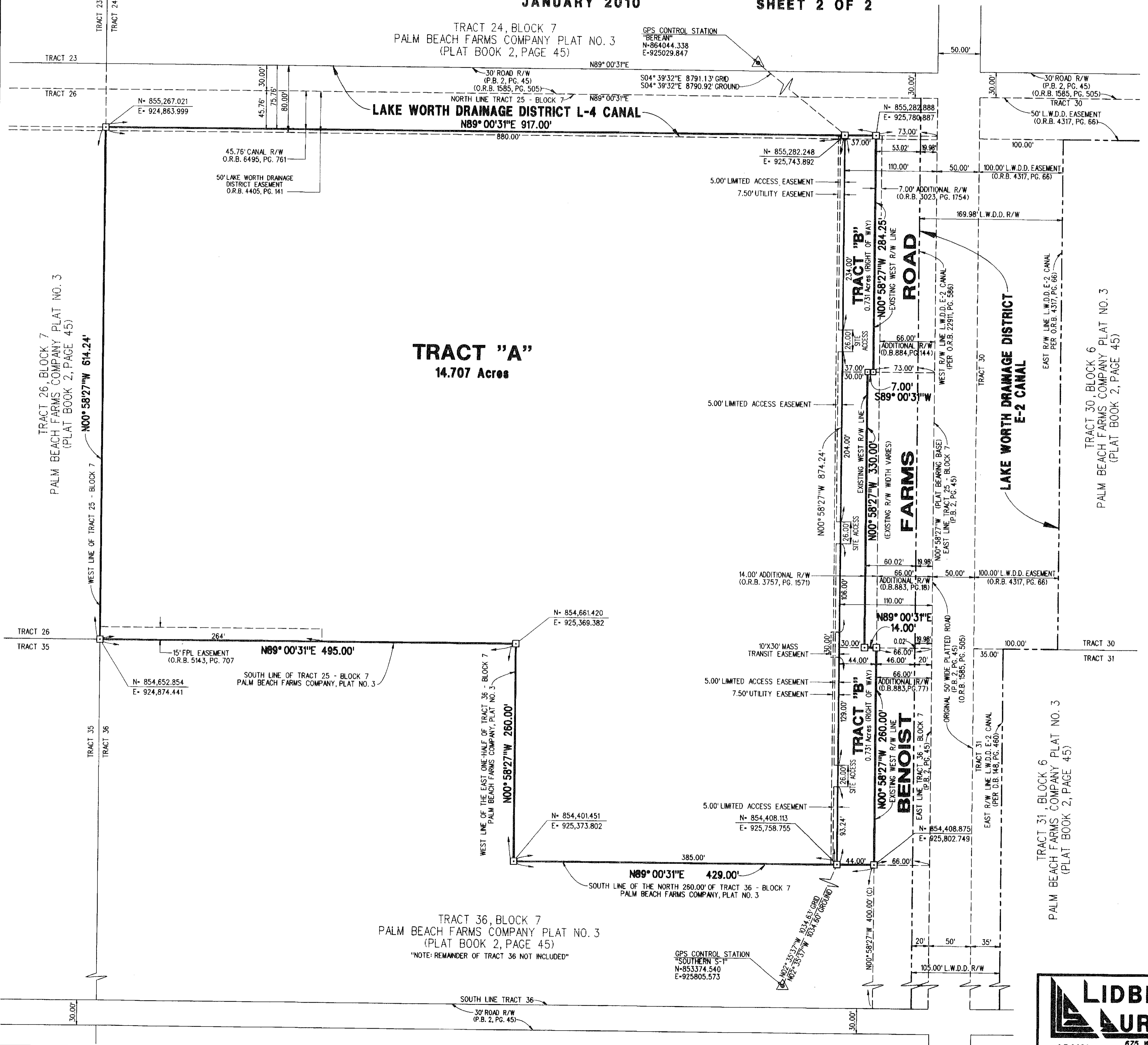
(FOUR BROTHERS RECYCLING)

BEING A REPLAT OF A PORTION OF TRACTS 25 AND 36, BLOCK 7, PALM BEACH FARMS COMPANY, PLAT NO. 3, AS SHOWN ON PLAT BOOK 2, PAGES 45 THROUGH 54, PUBLIC RECORDS OF PALM BEACH COUNTY, LYING IN SECTION 32, TOWNSHIP 43 SOUTH, RANGE 42 EAST, PALM BEACH COUNTY, FLORIDA

JANUARY 2010

SHEET 2 OF 2

192



PLAT POSITION AND ORIENTATION

COORDINATE SYSTEM: NATIONAL GEODETIC SURVEY; STATE PLANE TRANSVERSE MERCATOR PROJECTION

ZONE: FLORIDA EAST

HORIZONTAL DATUM: NORTH AMERICAN DATUM OF 1983, 1990 ADJUSTMENT (NAD83/90).

BEARINGS SHOWN HEREON ARE STATE PLANE BEARINGS (GRID) AND ARE REFERENCED TO A BEARING OF SOUTH 04°09'30" EAST BETWEEN PUBLISHED CONTROL STATIONS "BEREAN" AND "SOUTHERN S-1".

DISTANCES SHOWN HEREON ARE GROUND DISTANCES, UNLESS OTHERWISE NOTED.

LINEAR UNITS: U.S. SURVEY FOOT

SCALE FACTOR: 1.000024296

GROUND DISTANCE X SCALE FACTOR = GRID DISTANCE

ABBREVIATIONS:

- (C) = CALCULATED
- (M) = FIELD MEASURED
- (P) = AS SHOWN ON PLAT
- D.B. = DEED BOOK
- CONC. = CONCRETE
- F.P.L. = FLORIDA POWER & LIGHT CO.
- FND. = FOUND
- L.A.E. = LIMITED ACCESS EASEMENT
- L.W.D.D. = LAKE WORTH DRAINAGE DISTRICT
- MON. = MONUMENT
- O.R.B. = OFFICIAL RECORD BOOK
- P.B. = PLAT BOOK
- PG. = PAGE
- PGS. = PAGES
- R/W = RIGHT OF WAY
- S.F. = SQUARE FEET
- W/ = WITH

AREA TABULATION		
TRACT "A"	640,633 S.F.	14.707 ACRES
TRACT "B"	31,857 S.F.	0.731 ACRES
TOTAL	672,490 S.F.	15.438 ACRES

LIDBERG LAND SURVEYING, INC.
 675 West Indiantown Road, Suite 200,
 Jupiter, Florida 33458 TEL: 561-746-8454

CAD. K:\JUST \ 324342 \ 02-45 \ 07-042-306 \ 07-042-306 \ 07-042-306.DGN			
REF.			
FLD.	FB.	PG.	JOB 07-042-306
OFF. CASASUS			DATE MARCH 2009
CKD. D.C.L.	SHEET 2	OF 2	DWG. 007-042P